

Expert on Flash Chromatography

Single Channel Automated Flash Chromatography Systems AI-580 Series



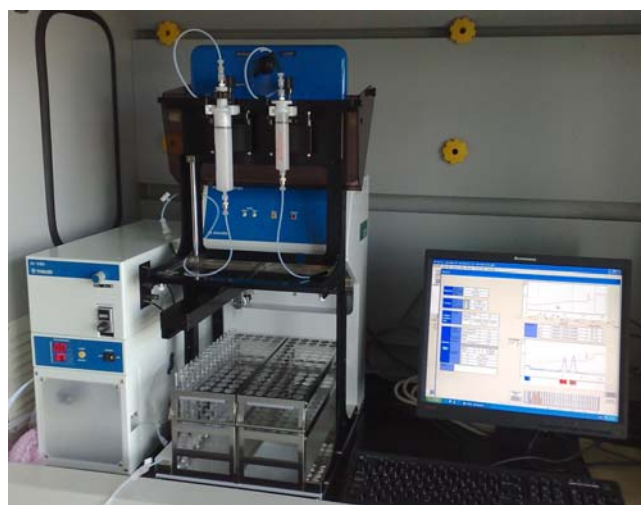
“NEW” A-1 Type (More compact, modular & space-saving)

Solvent bottles are put either on the Fraction Collector for space-saving or put on the side for easy and safe refilling.



A-2 Type

(Easy access to solvent bottles on the bench beside the pump)



B Type

(Column stand equipped with Equilibration & Run select valve)

Intelligent & Eco-Friendly!

Fast and Efficient Separation

A target compound will always elute at around 4 columns volume regardless of column size and flow rate, minimizing the run time while achieving a good separation.



Minimize Solvent Consumption.



Eco-Friendly!



YAMAZEN CORPORATION

Capabilities and Functions

- Automatic method setup based on TLC data (Rf & solvent)
- Eluting position predictable: The target compound will always come out at around 4 columns volume, regardless of column size and flow rate.
- Software to give the sample load information – automatic method scaling
- Method change during a run – Click & drag
- Simple and easy change of running parameters on the fly
- Easy change-over of the collection modes; Time, Peak, Peak & Slope, and Manual Collect, during a run
- A powerful UV detector: Can be used in a wide OD range of 0.08-5.12. Capable of detecting up to 4.0 AUFS.
- 4 different solvent systems (A & B, A & C, B & D, C & D) can be selected during run to change the solvent system for an increased run efficiency.
- Low concentration (slow) gradient (1-5% polar B solvent) is possible over a wide range of flow rate, 3-80ml/min.
- Pressure moderating system to continue a run when pressure builds up suddenly
- Real time monitoring of %B on the gradient when ramping up, to see the behavior of the sample in the solvent mixture

Basic System Configuration of AI-580 Series

Controller	Touch screen or regular computer
Solvent delivery pump, No. 580	3-80ml/min. 0-1.0 Mpa (145 psi), Equipped with a high precision siphoning-free valve less ceramic piston pump.
Fraction collector, FR-360	Equipped with X/Y driven fraction arm. Holds a pair of two racks: For American std. tube sizes: 13x100 – 75 tubes (AI13100), 15x125 – 75 tubes (AI15125), 16x125 – 75 tubes (AI16125), 16x150 – 75 tubes (AI16150), 18x150 – 75 pieces (AI18150), 25x150 – 30 tubes (AI25150), 25x200 – 30 tubes (AI25200) For Japanese std. tube sizes: 15x150 – 75 tubes (AI15150), 18x180 – 75 tubes (AI18180), 24x180 – 30 tubes (AI24180), 30x180 – 27 tubes (AI30180), 30x200 – 27 tubes (AI30200), 60x180 – 10 tubes (AI60180)
UV detectors	Fixed wavelength, 254nm, prepUV-254 Variable wavelength, 190-350nm, prepUV-10V UV/Visible, 190-600nm, prepUV-VIS-10V Detector range: 0.08-4.0 AUFS
Column stand	Three types are available: (1) Two square pillars installed parallel in front of the pump (2) Two round pillars installed parallel in front of the pump (3) Equilibration & Run select valve is installed on the fraction collector (This column stand is made exclusively to fit the Yamazen flash columns.)
Options	Solvent level monitor, Waste fluid monitor, Column air purge



YAMAZEN CORPORATION

HEAD OFFICE RECRUIT SHIN-OSAKA BLDG. 3F, 5-14-22 NISHINAKAJIMA,
YODOGAWA-KU, OSAKA 532-0011, JAPAN
TEL: +81-6-6304-5839 FAX: +81-6-6304-3681
R & D TEL: +81-6-6304-7284 FAX: +81-6-6304-7283
TOKYO OFFICE TEL: +81-3-5256-6481 FAX: +81-3-5256-6480
E-MAIL: info@yamazenc.co.jp WEB SITE: www.yamazenc.co.jp



YAMAZEN SCIENCE, INC.

903 SNEATH LANE, SUITE 125 SAN BRUNO, CA 94066
TEL: 650-877-7750 FAX: 650-873-6496
E-MAIL: info@yamazenc.com
WEB SITE: www.yamazenscience.com