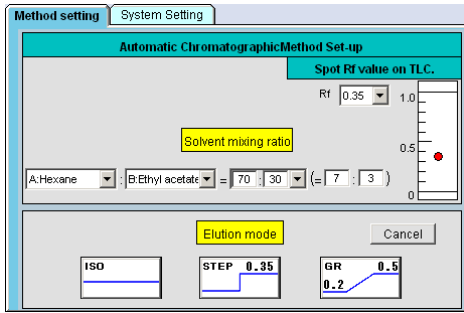
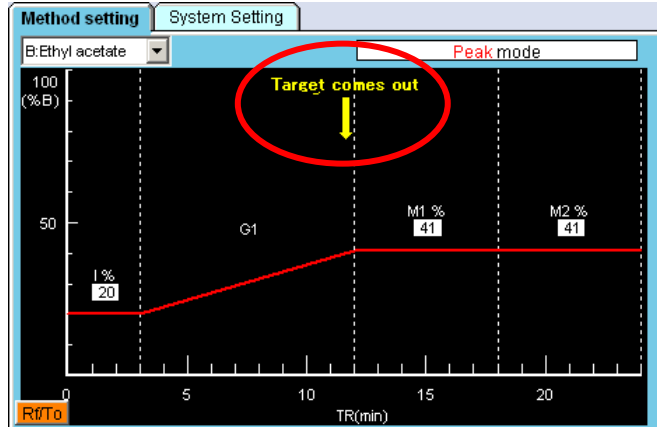


■ Yellow arrow(s) predicts the eluting position of the target compound(s).

- Input TLC results in method setup dialogue boxes.



- The optimum method is set automatically. And the eluting position of the target compound will be indicated on the gradient graphic.



◎ The target compound will elute at around 4-column volume.
 ◎ The predictable eluting position of the target compound always stays the same regardless of the column size and the flow rate.
 ◎ The system to predict the eluting position of the target compound will minimize the run time, save energy and solvent. **It is Eco-Friendly.**

- The target compound will come out where predicted.

