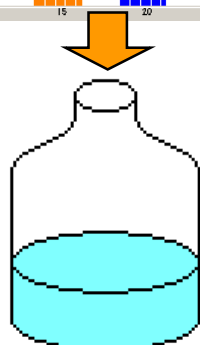
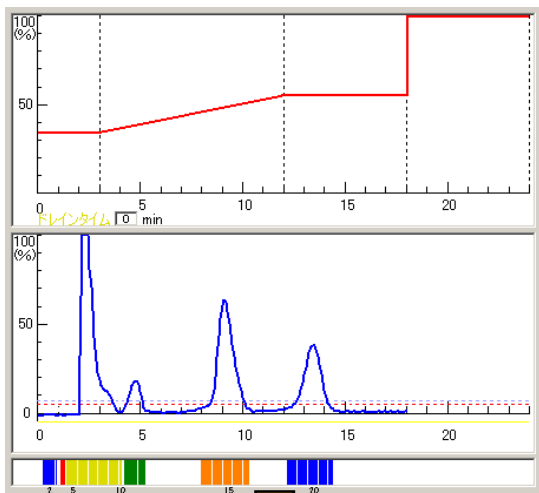


Eco-Friendly!

This is what we, Yamazen, have been pursuing.

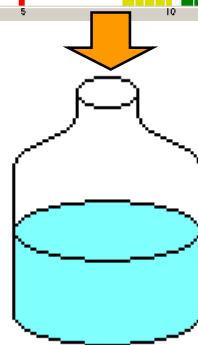
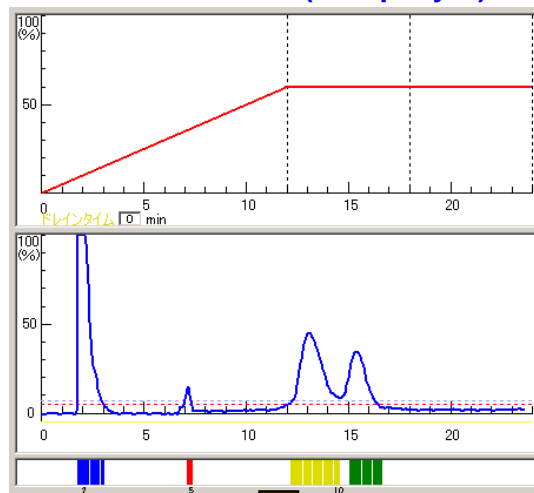
Minimize Solvent Consumption

Yamazen's Rf Gradient Method



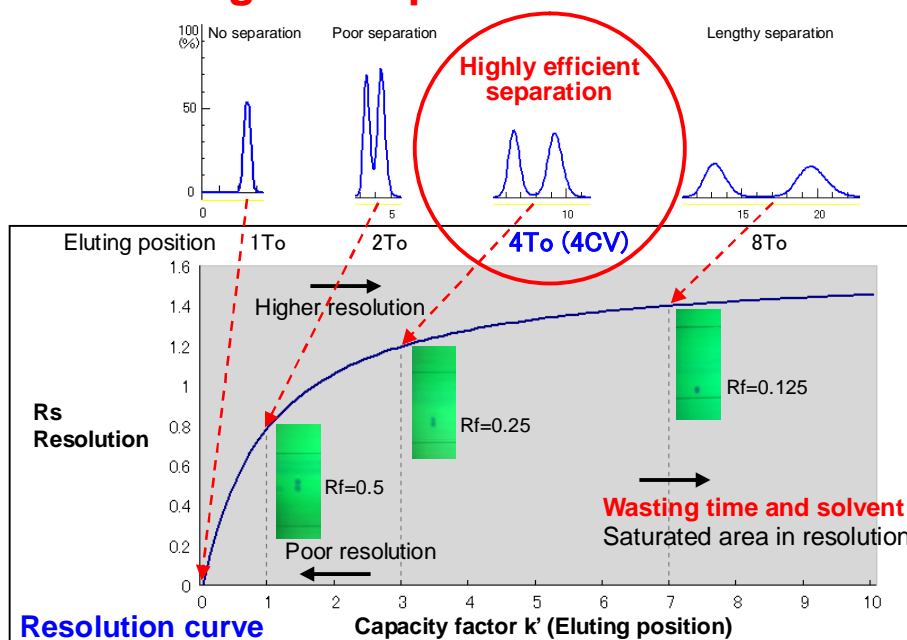
240ml

0-60% Gradient (Company A)



300ml

Elute a Target Compound at the Best Position



Eluting Position Predictable

The target compound will always come out at around 4-column volume.

Highly Efficient Separation

The system to predict the eluting position of the target compound will minimize the run time, save energy and solvent while achieving a good sample separation. It's eco-friendly.



YAMAZEN CORPORATION