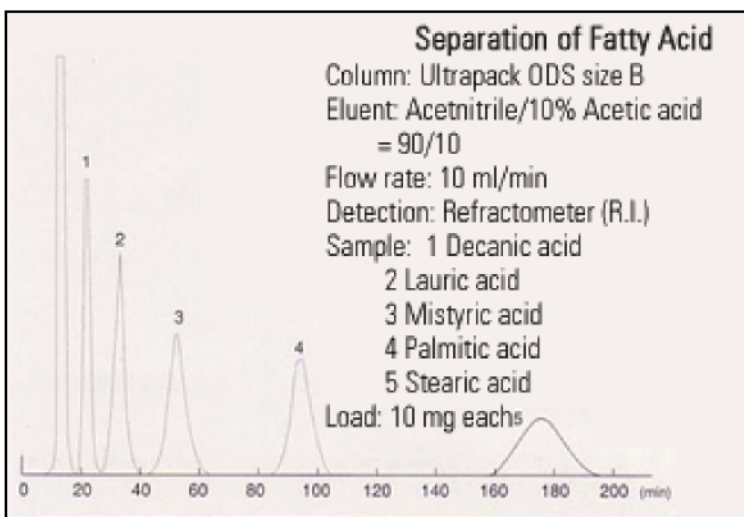
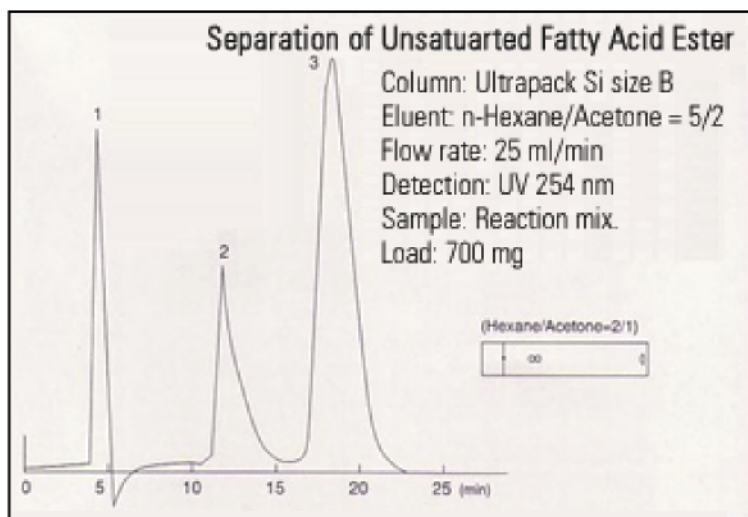
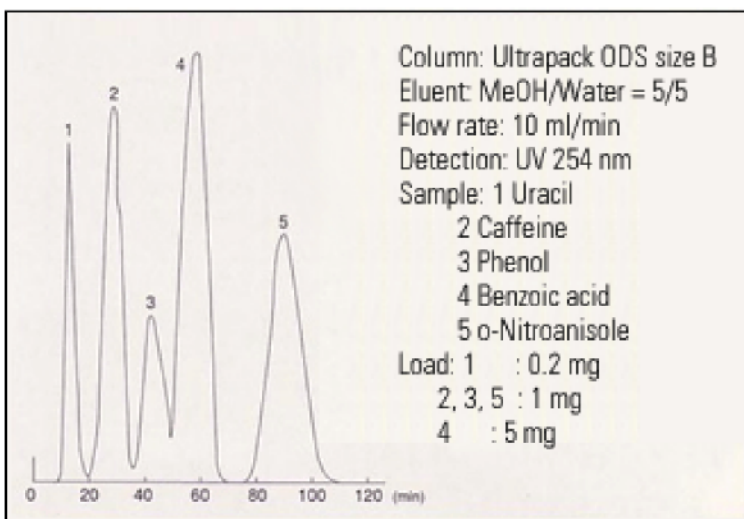
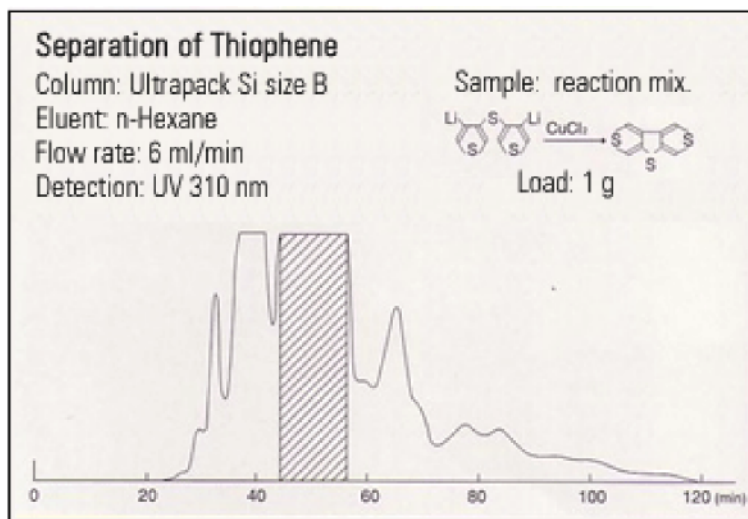
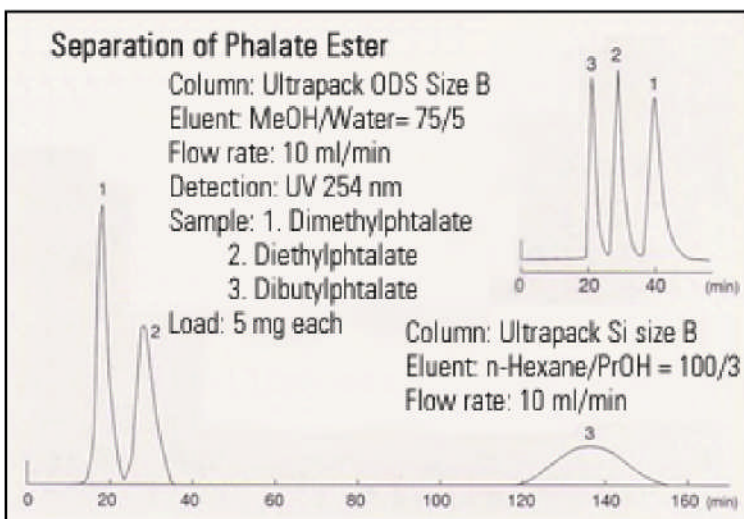
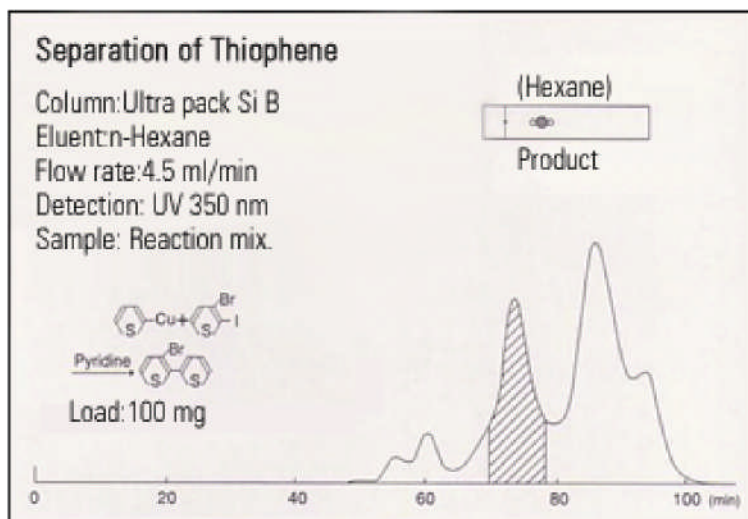


● Example of separation



## ● Example of separation 2

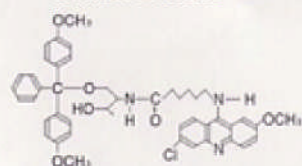
### Separation of Acridine Derivative

Column: Ultrapack Si size B  
Eluent: Chloroform/MeOH = 20/1  
Flow rate: 5 ml/min  
Detection: UV 270 nm  
Sample: Reaction mix.

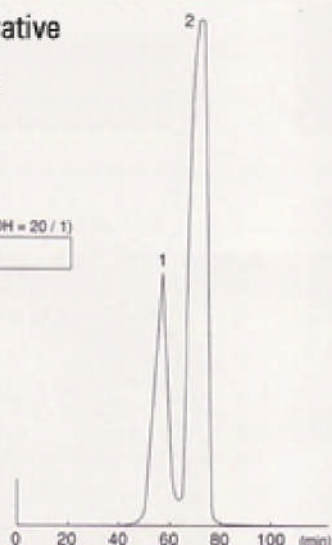
1 Byproduct

2 Main Product

(CHCl<sub>3</sub> / MeOH = 20 / 1)



Load: 20 mg



### Separation of Polycyclic Aromatic Series

Column: Ultrapack ODS size B  
Eluent: MeOH/Water = 90/10  
Flow rate: 10 ml/min  
Detection: UV 254 nm  
Sample: 1. Naphtalene

2. Diphenyl

3. Anthracene

4. Triphenylene



Load: 1 3 5mag each

4 0.5 mg

