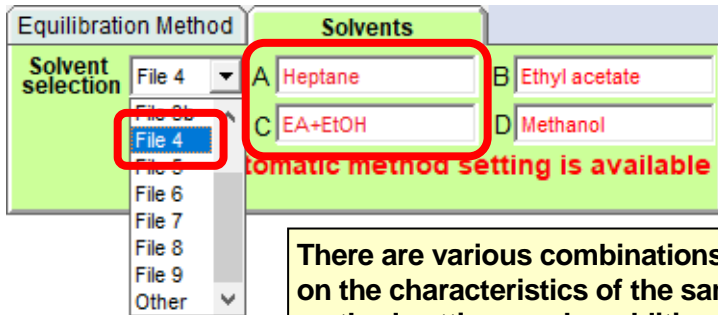


## New solvent systems can be made to order for Yamazen automatic method setting

### Some custom-made solvent systems

1. Dichloromethane / acetonitrile
2. Hexane / acetone
3. Heptane / Ethyl acetate + Ethanol (3 + 1) (Introduction of examples)

Select a new solvent system from solvent set



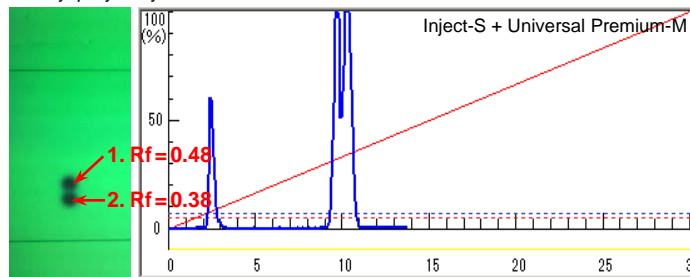
Automatic method setting with new solvent systems is possible.

There are various combinations of solvents used for chromatography, depending on the characteristics of the sample to run. With the Yamazen app, automatic method setting can be additionally supported, even with a combination of special solvents other than common solvents. Please consult us.

### Other manufacturers' gradient method

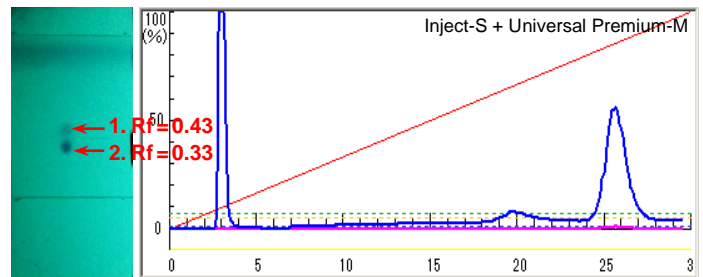
(Method: 0 ⇒ 100 % 10 CV Gradient)

1. Butyl-*p*-hydroxybenzoate
2. Ethyl-*p*-hydroxybenzoate



Heptane: (ethyl acetate + ethanol) (3 + 1)  
70:30

1. pyrimidine
2. caffeine

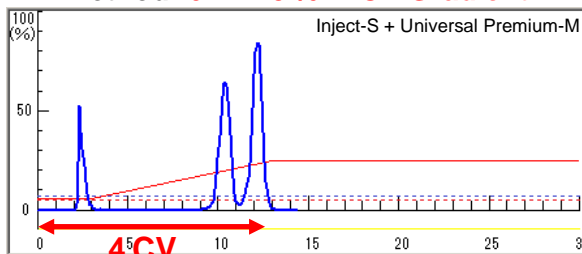


Heptane: (ethyl acetate + ethanol) (3 + 1)  
30:70

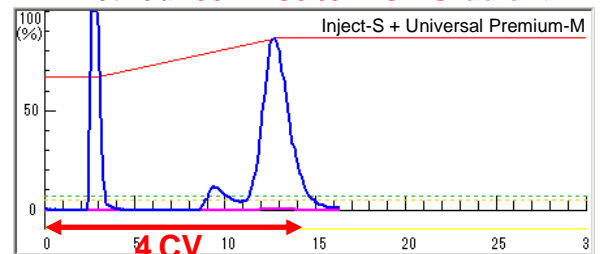
None of them is good chromatography

### When running samples by Yamazen automatic method setting ...

Method: 6 ⇒ 25 % 4 CV Gradient



Method: 66 ⇒ 86 % 4 CV Gradient



The target compound elutes at the predicted 4 CV position.  
No waste of solvent and time.