

■ SAMPLE RUN CONTINUES EVEN WHEN THE LINE PRESSURE INCREASES RAPIDLY.

— A Perfect Safety Measure for the Sudden Pressure Build-up —

Pressure Moderation System

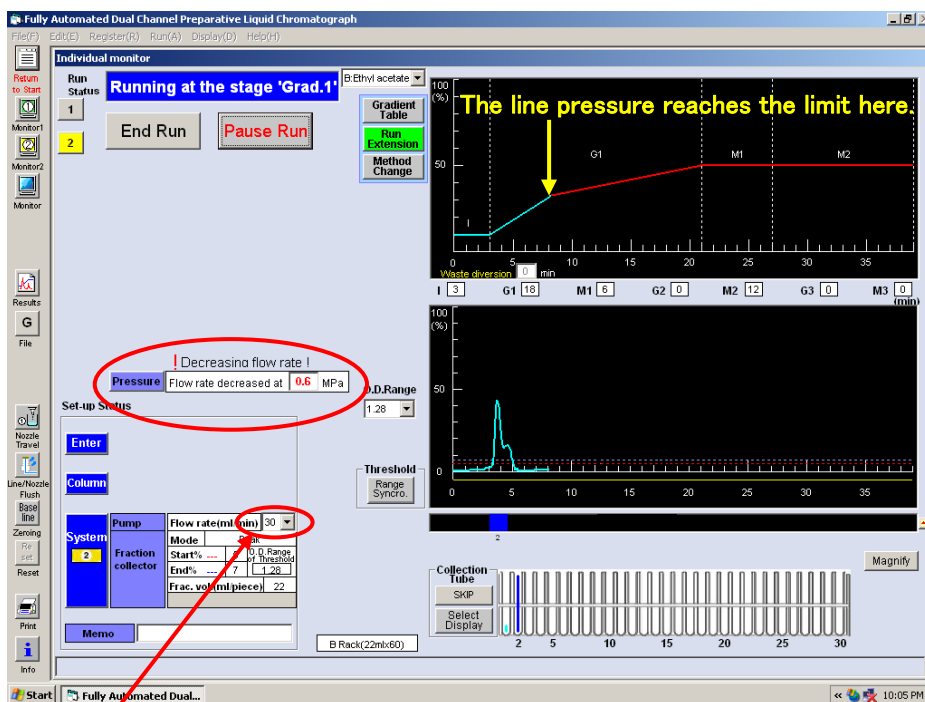
■ If the line pressure reaches the maximum preset value, the flow rate will automatically drop 50% and the rest of the run time will be extended twice as long as the original setting, and the system will continue running. However, if the pressure reaches the limit again after decreasing the flow rate, the pump will stop and your computer will give alarm. You can select a preset value from 0.4MPa, 0.6MPa, 0.8MPa and 1.0MPa depending on the run application.

■ Plastic column and/or a glass column can be used to safely run your samples.

■ Cause of the sudden pressure rise:

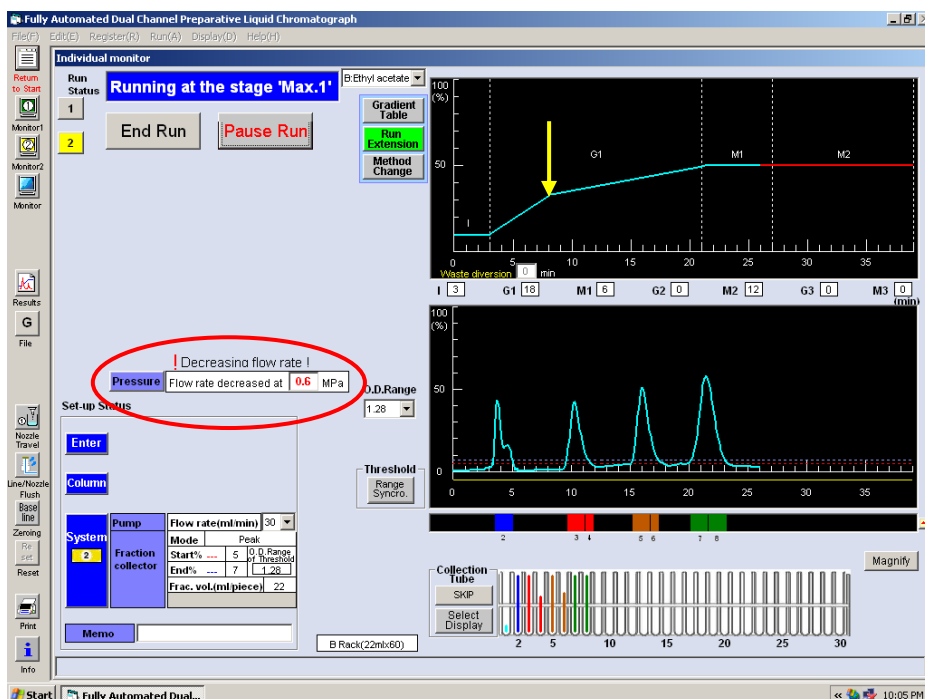
1. Crystallization of a sample inside the column and/or tubing
2. Running a high viscosity sample
3. Clogged flow cell, clogged filters and clogged tubing
4. Others

■ “Decreasing flow rate!” will appear above the window for the preset pressure value.



Dropped from 60ml to 30ml.

Flow rate will drop 50% and the rest of the run time will be doubled.



If the line pressure hits the limit again after decreasing the flow rate, the pump will automatically stop and the computer will give alarm.