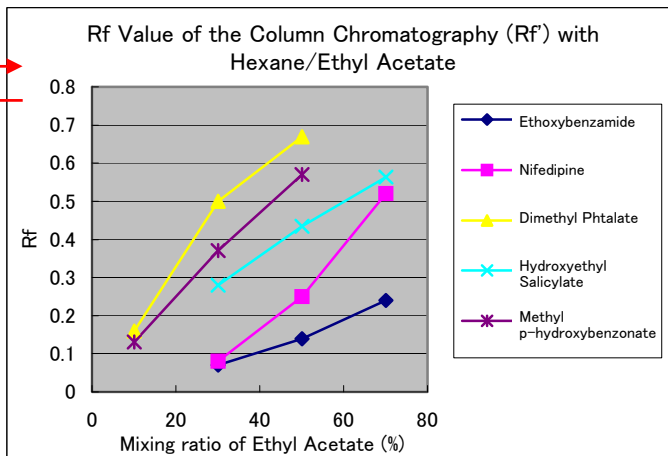
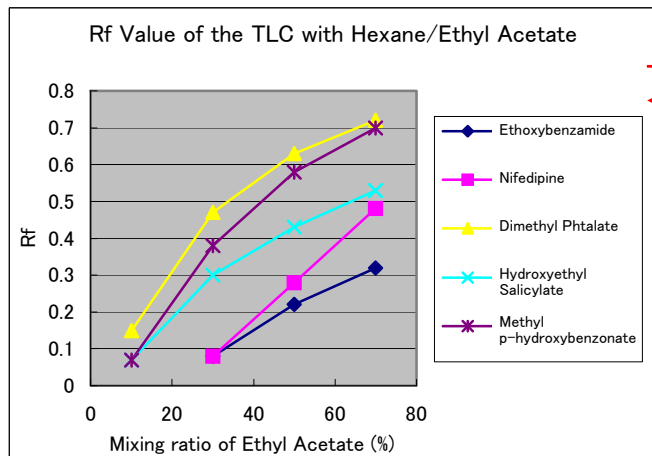


Correlation between the TLC and the Column Chromatography using Yamazen's Silica Gel Columns

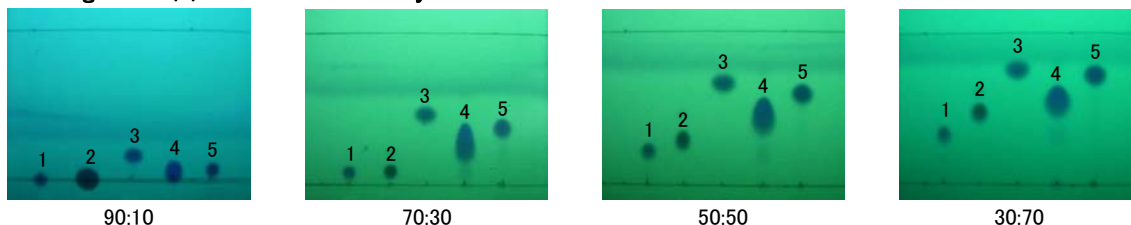
■ Due to an excellent correlation between R_f value of the TLC and that of Yamazen's column chromatography, Yamazen's Automatic Method Development based on the TLC result assures fast and accurate purifications.



Compounds

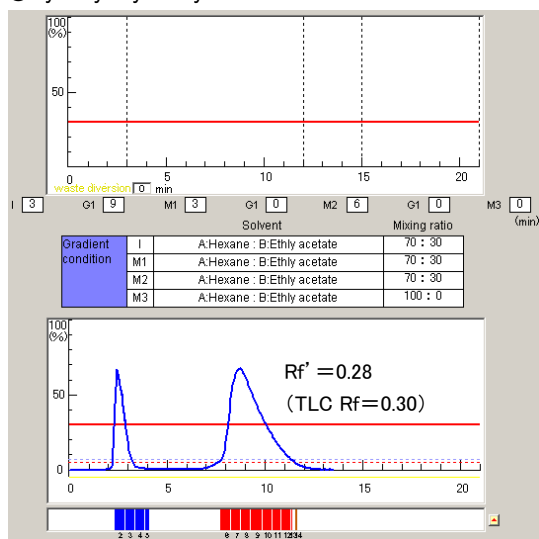
① Ethoxybenzamide	② Nifedipine	③ Dimethyl Phthalate	④ Hydroxyethyl Salicylate	⑤ Methyl p-hydroxybenzoate

TLC and Mixing Ratio (%) of Hexane and Ethyl Acetate



Preparative Liquid Chromatography [Column used: Yamazen's L-size (30g) Hi-Flash packed with Silica Gel]

Hydroxyethyl Salicylate



Methyl p-hydroxybenzoate

