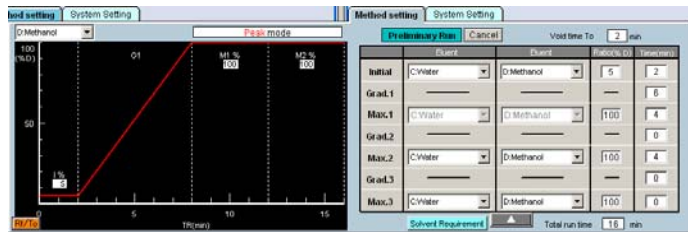


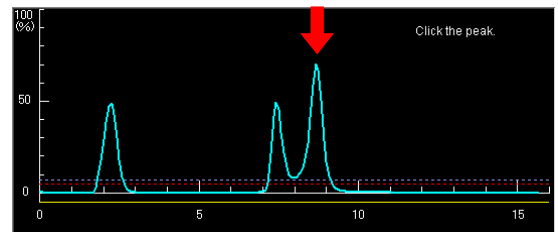
Optimized Method Set-up for Reverse Phase Chromatography

- With the use of the ODS column an optimal gradient method can be automatically developed for reverse phase chromatography

● First, do a preliminary run of a small amount of sample.

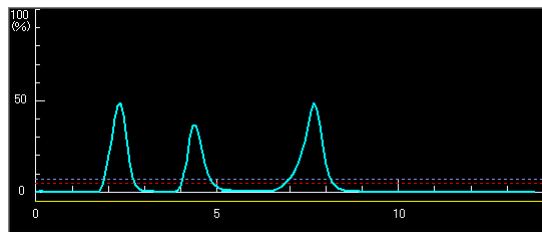


● Click the peak of the target.

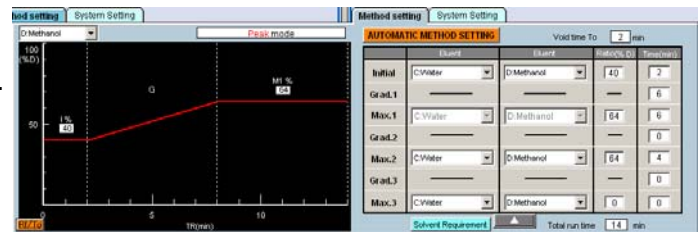


● The target will be eluted at around 4-column volume. Good separation, short run time, and minimized solvent consumption. Thus result in the most efficient chromatography.

● Return to the initial page. An optimized gradient method will be automatically developed.



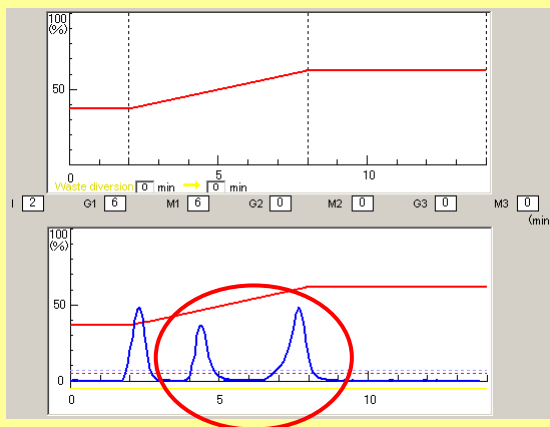
Start run.



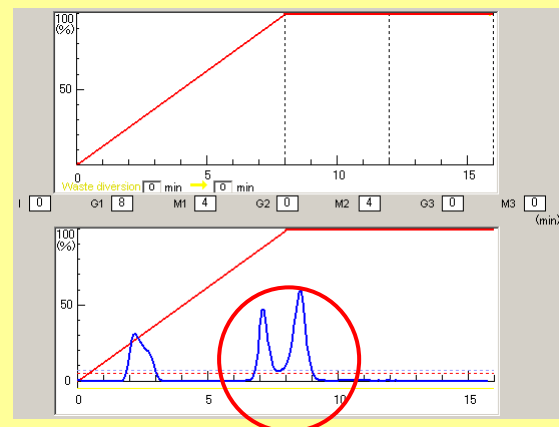
- The sample used for the preliminary run can be saved, and HPLC and/or TLC need not be run on in advance.

[Comparison between Yamazen and others]

(A) Yamazen's Automatic Gradient Method



(B) 0-100% Gradient of Other Brand



- Eco-friendly Yamazen's Automatic Gradient Method achieves excellent sample separation as shown above in (A), and it can take a larger amount of samples. It also shortens the run time, minimizes the solvent consumption and radically reduces the cost of acquiring solvents and disposing of the waste.