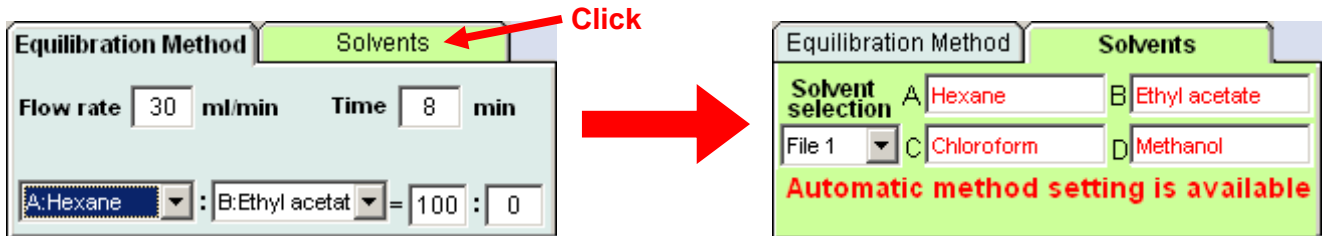
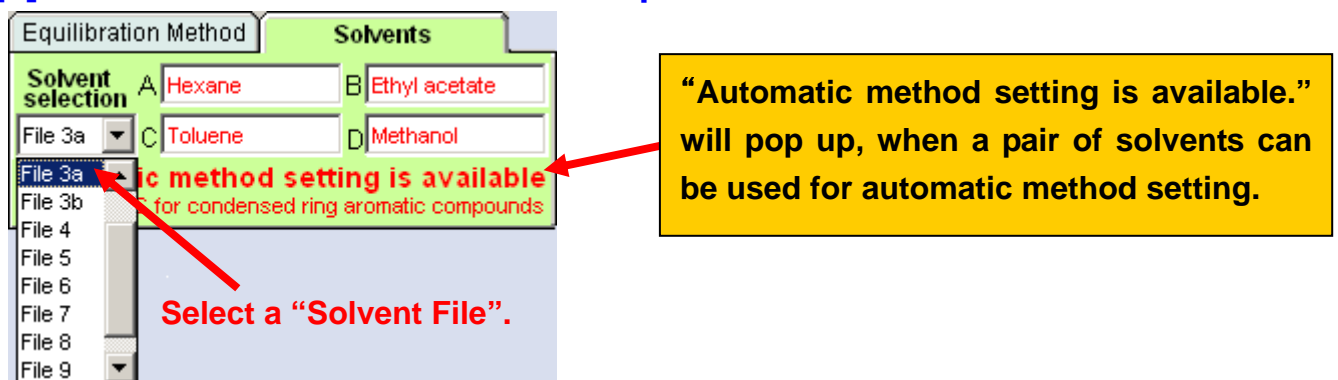


More solvents are now available for Yamazen's Automatic Method Setup.

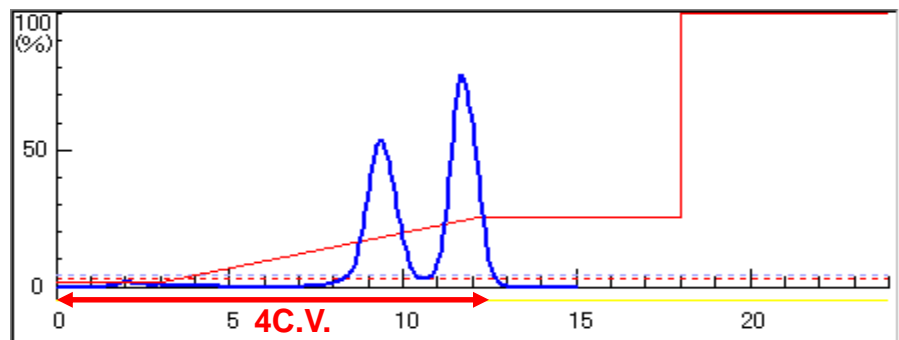
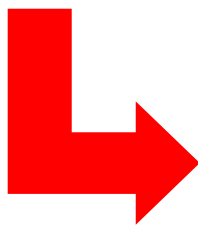
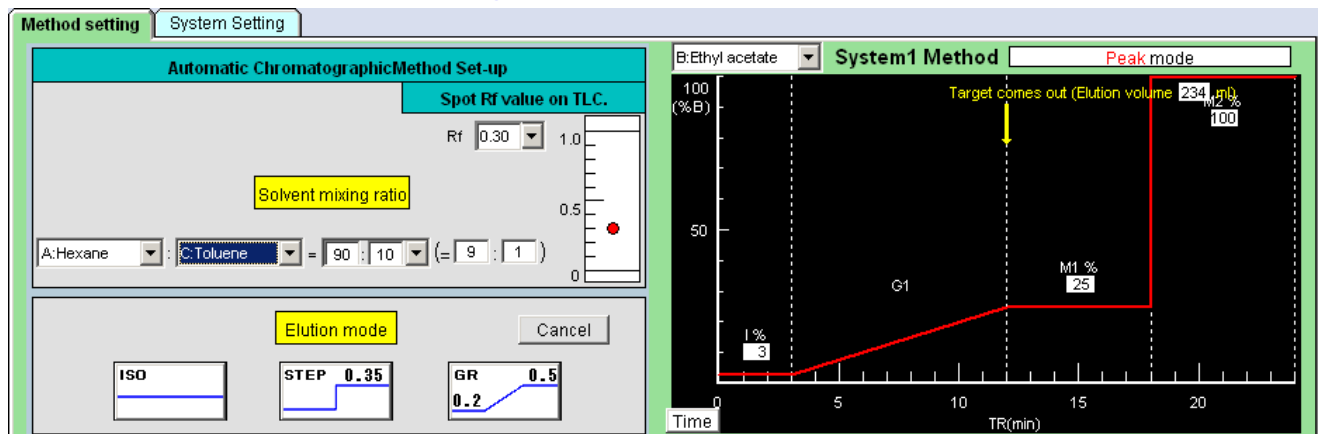
[1] Select a column, and click on [Solvents].



[2] Choose a "Solvent File" from the pull-down menu.



[3] Automatic method setting is possible with a new pair of solvents.



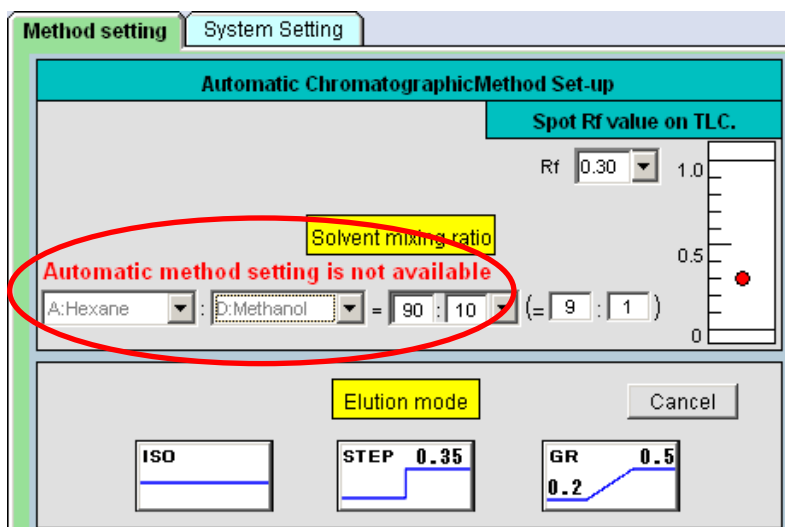
A target compound elutes at the predicted 4-column volume position.

Solvent Selection

Solvent	A	B	C	D	Note
File 1	Hexane	Ethyl acetate	Chloroform	Methanol	Most commonly used.
File 2	Hexane	Ethyl acetate	Dichloromethane	Methanol	C: Dichloromethane
File 3	Hexane	Ethyl acetate	Toluene	Methanol	A combination of A&C solvents: Suitable for condensed ring aromatic compounds.
File 4	Hexane	Ethyl acetate	Toluene	Methanol	A combination of A&C solvents: Suitable for aromatic compounds containing heteroatom.
File 5	Hexane	Ethyl acetate	Water	Methanol	Reverse phase
File 6	Hexane	Ethyl acetate	Water	Acetonitrile	Reverse phase D: Acetonitrile
Others	Any solvent	Any solvent	Any solvent	Any solvent	Any solvent can be chosen.

*Files 4-7 are the same as file 1.

“**Automatic method setting is not available.**” will pop up on the screen if any combination of solvents with which automatic method setting is not possible is selected. The selected solvents will be grayed out upon inputting the solvent mixture ratio.



Auto method setting is not possible with:

Hexane/Methanol
Toluene/Methanol
Hexane/Water
Ethyl acetate/Water
Hexane/Acetonitrile
Ethyl acetate/Acetonitrile