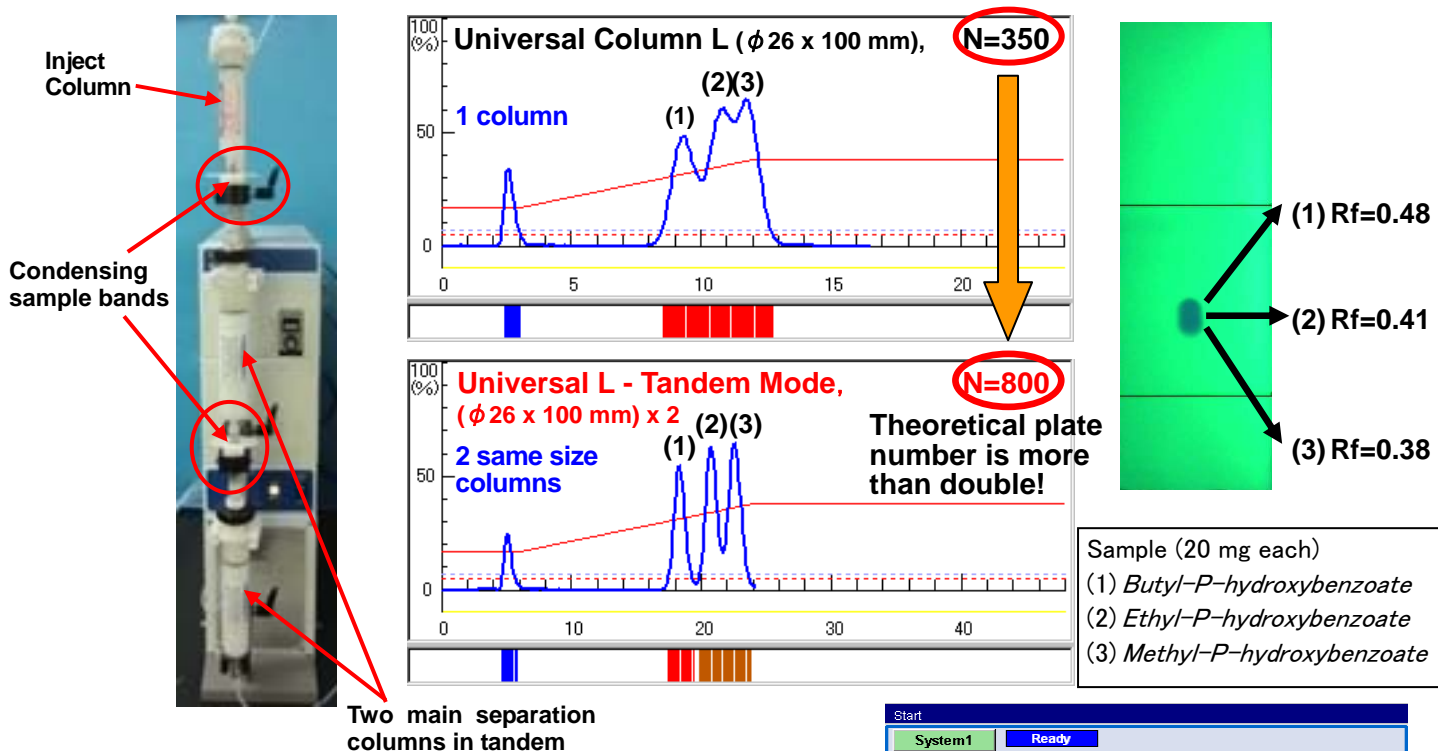


Tandem Mode (An Inject Column and 2 Separation Columns in Tandem) - Solution For Difficult-To-Separate Sample -

To successfully separate the difficult-to-separate sample, with the target compound and the nearest impurity that are very close to each other, it would require a high performance column with a high theoretical plate number. A long column should give the high theoretical plate number, however, it could cause deformation of the sample band and/or the broad sample band if it is not of good quality, which will result in a poor separation. The picture below shows the tandem mode (one Inject Column for sample loading plus 2 same size separation columns in tandem) condenses the sample bands twice. The tandem mode is free from the deformation of the sample bands and broad sample bands. Two columns in tandem will also add up to the theoretical plate number. Thus it is a perfect solution for separating the difficult-to-separate sample. This new function is available with software version XY5_110830a and after. Methods for the tandem mode will be automatically developed upon clicking its button on display.



<Automatic Set-up>

Clicking on the Tandem Mode when choosing a column will automatically develop the method for tandem mode. If the initial choice was for one separation column, and then the tandem mode is chosen afterwards, the tandem mode will over-ride the choice for the one column mode.

Column Selection: Universal L is selected. **Tandem mode** is selected.

Automatic Method Setting:

Eluent	Eluent	Retention	Time
Initial	A:Hexane	B:Ethyl acetate	10
Grad.1			21
Max.1	A:Hexane	B:Ethyl acetate	150
Grad.2			0
Max.2	A:Hexane	B:Ethyl acetate	50
Grad.3			0
Max.3	A:Hexane	B:Ethyl acetate	0

Flow rate: 30 ml/min, Time: 20 min

Method setting: **7 min**