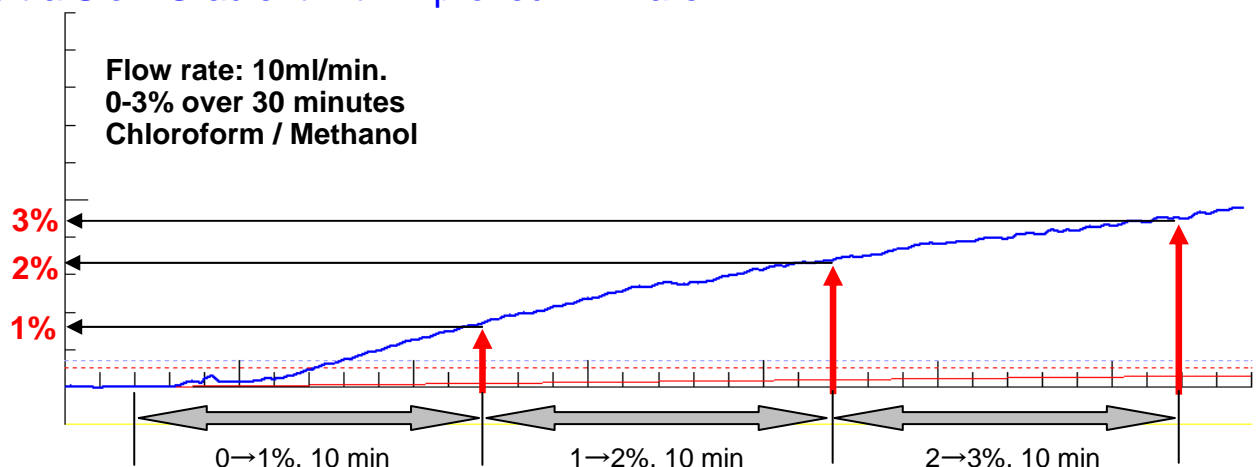


Ultra Slow Gradient (0-3% over 30 minutes) Ideal Gradient for Solvent Family Like Chloroform and Methanol

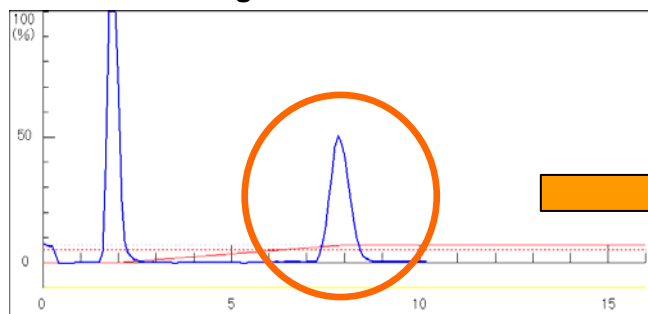
Mixture of polar solvent needs to be precisely controlled when purifying samples of which Rf value changes largely by the amount of polar solvent like chloroform and methanol. These kinds of samples would require highly accurate ultra slow gradient like 0-3% over 30 minutes. The firmware has been upgraded to control the solvent mixture better, which improves the accuracy greatly of the ultra slow gradient in full range of the flow rate and throughout the gradient. Thus running on the gradient, sample bands become narrower to achieve a great purification, and the eluting position can be controlled very precisely.

< Ultra Slow Gradient with improved firmware >

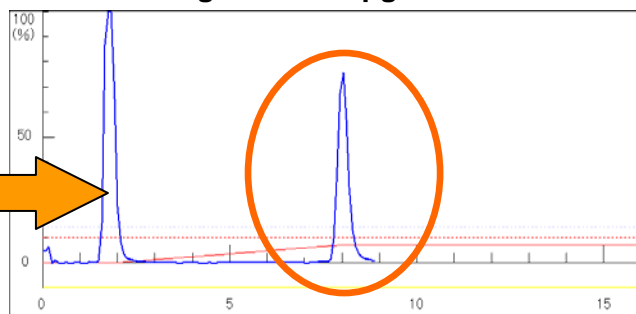


< Sharper Peak with upgraded firmware >

Chromatogram with old firmware



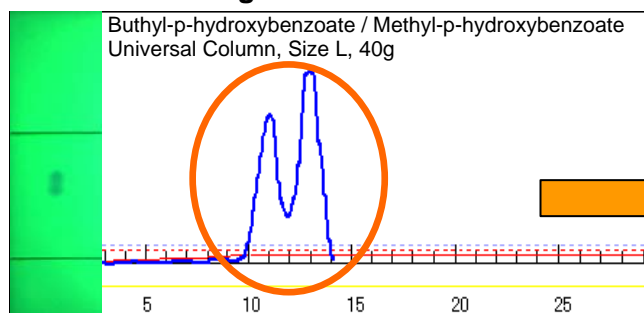
Chromatogram with upgraded firmware



Narrower Sample Band, Sharper Peak

< Purification Improved by highly accurate ultra slow gradient (0-3% over 10 minutes) >

Chromatogram with old firmware



Chromatogram with upgraded firmware

