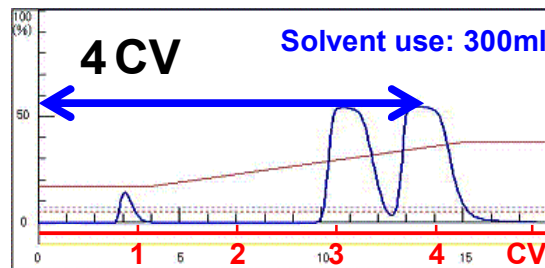
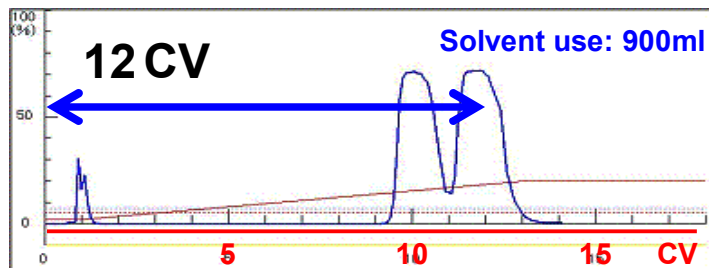


Drastic Reduction of Solvent Use in Silica Gel Chromatography!



“Smart Chromatography” fully controls the sample elution position.

Elution Position Control (EPC) function achieves the drastic solvent reduction.

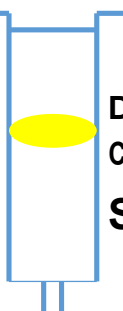
Solvent use: 1/3

× **=**

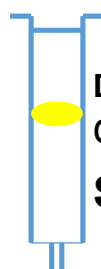
Solvent use in total: 1/9

Solvent use: 1/3

Reduction of solvent use by using the most suitable column size



Diameter: 4.6cm
Cross-sectional area: 16.6cm²
Sample load: 1~15g



Diameter: 2.6cm
Cross-sectional area: 5.3cm²
Sample load: 3g



“Smart Chromatography” calculates the maximum sample load for any column selected.

- EPC (Elution Position Control) Gradient chromatography achieves a drastic reduction of solvent use.
- “Smart Chromatography” calculates the maximum sample load for each column. This allows the chemist to choose the smallest column possible instead of an unnecessarily large column.
- Further column downsizing is possible by using the Yamazen’s high resolution column.