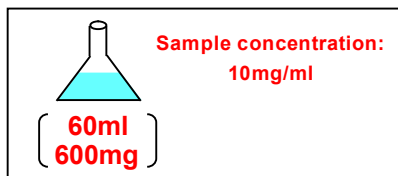
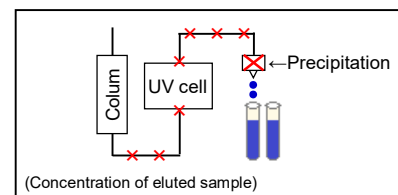


How to separate the easily precipitated samples?

Case 2: Dilute a sample in advance to avoid the precipitation of the sample.

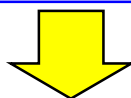
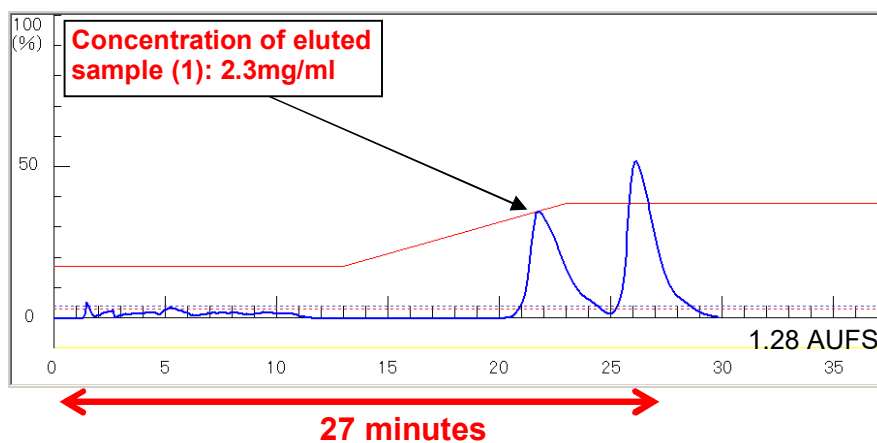
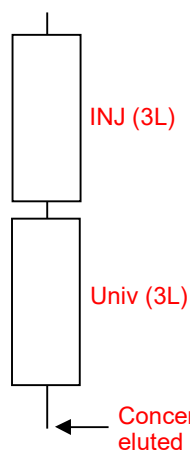
Make sample concentration low and increase sample load (a sample consisting of 2 compounds).



Sample: Butyl-p-hydroxybenzoate + Methyl-p-phdroxybenzoate
Method: Ethyl-acetate, from 17% to 38% on Rf gradient

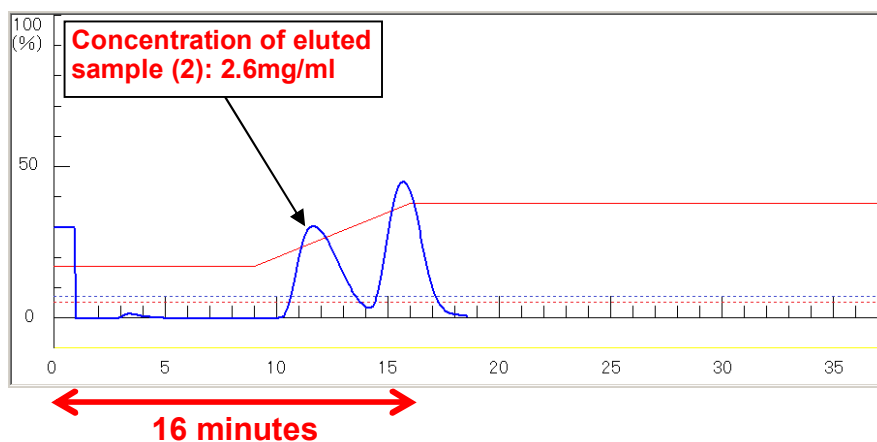
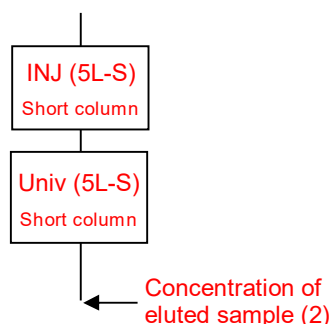
A sample run with the use of a large column

< 1 > Inject Column 3L-size + Universal Column 3L-size, Flow rate: 60ml/min



Use a short column to avoid the precipitation of a sample.

< 2 > Inject column 5L-S + Universal column 5L-S, Flow rate: 80ml/min



If Inject Column 5L-S and Universal Column 5L-S are used together, a sample will be eluted faster than < 1 > and the precipitation will be avoided.