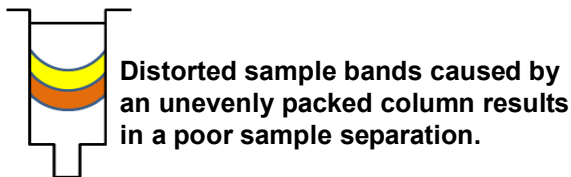
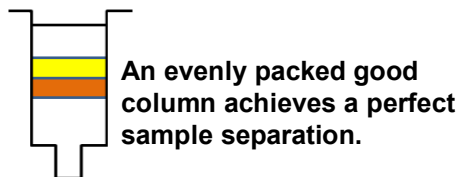


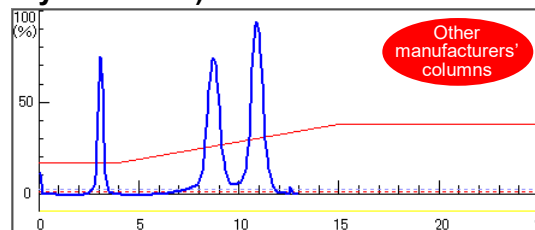
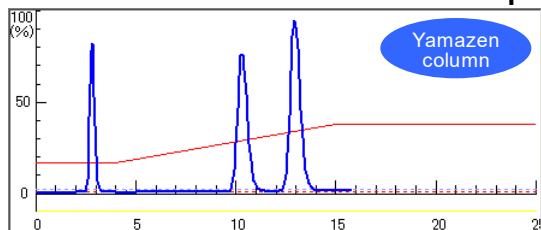
Flash column

Difference of column performance

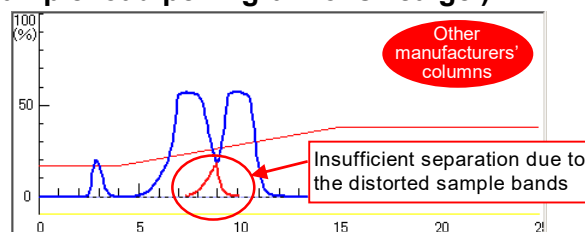
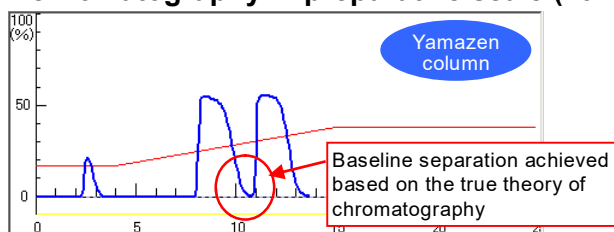
-- An evenly packed column and an unevenly packed column --



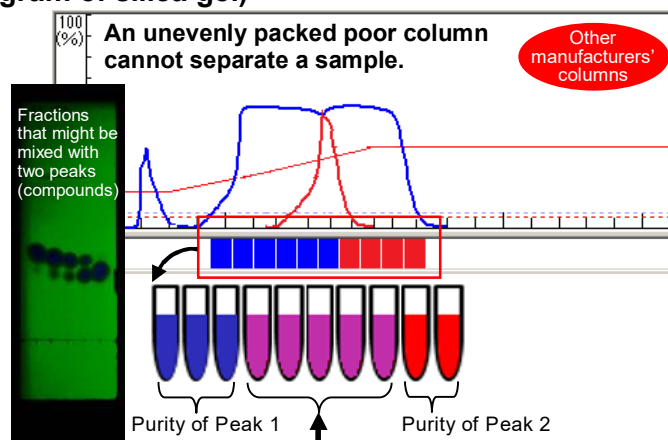
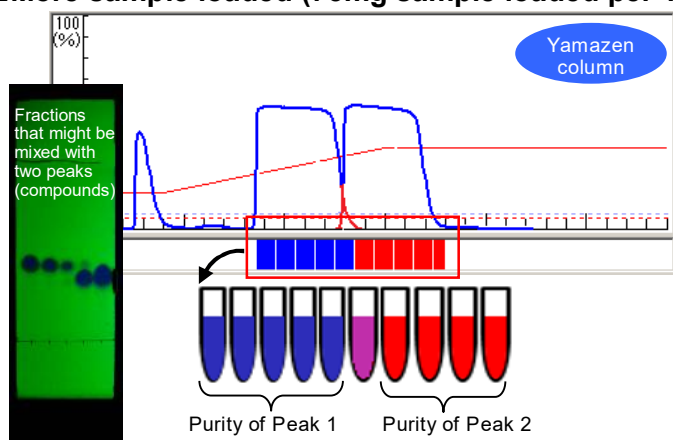
■ Evaluation of a column with a small sample load (Analytical scale)



■ Flash chromatography in preparative scale (10mg sample load per 1 gram of silica gel)



■ More sample loaded (75mg sample loaded per 1 gram of silica gel)



Two peaks (compounds) are mixed and not separated.

Even if an excessive amount of sample (100mg sample loaded per 1 gram of silica gel) is loaded, a high performance Yamazen column can separate a sample well. The shape of the sample peaks produced by a Yamazen column and that by another company's column seem similar, however there is a big difference in the result of separation.

