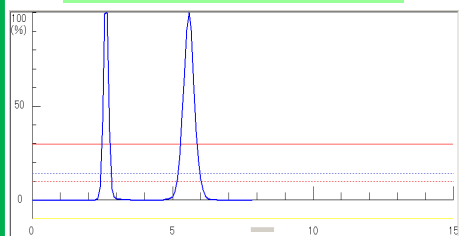


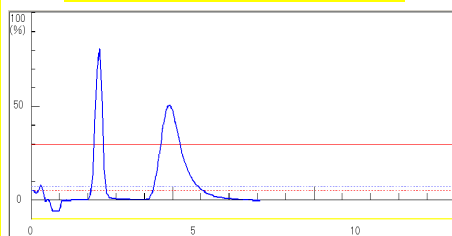
Comparison of Column Performance – Yamazen & Other manufacturer

Yamazen Premium Universal Column L-Size
30µm 40g Silica Gel



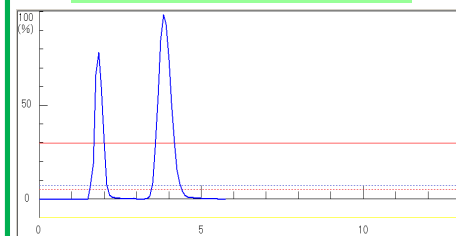
Theoretical Plate Number
N = 887

Company SC's column
40-63µm 40g Silica Gel



Theoretical Plate Number
N = 153

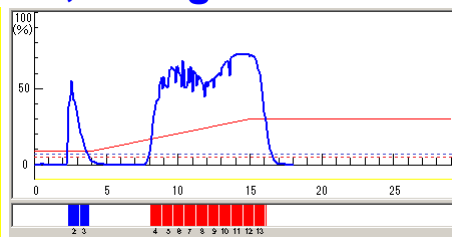
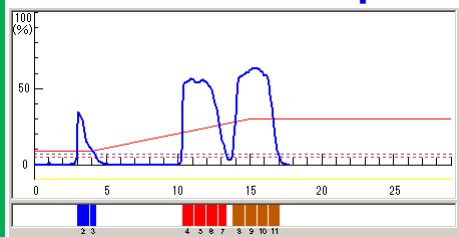
Yamazen Premium Universal Column M-Size
30µm 16g Silica Gel



Theoretical Plate Number
N = 382

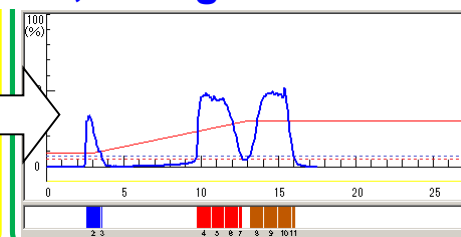
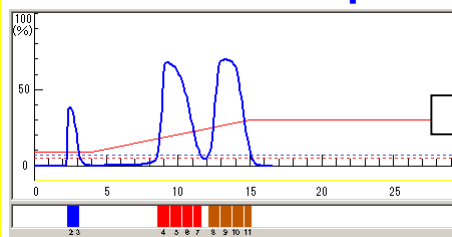
Yamazen columns exhibit high theoretical plate numbers and produce sharp, symmetrical sample peaks while the theoretical plate number of Company SC's column is only about 1/6 of that of Yamazen column, and Company SC's column shows peak tailing. This peak tailing is apparently caused by poor packing technology.

Sample Size 4,000mg



Yamazen column produces good sample peaks whose slopes are sharply cut against baseline. Thus, it can take a larger amount of sample.

Sample Size 2,000mg



Yamazen 16g M-size column can separate the same amount of sample as well as Company SC's 40g column does. Therefore, Company SC's 40g 40-63µm silica column can be well replaced by the Yamazen 16g M-size 30µm silica column. A drastic column down-sizing is possible with Yamazen high performance columns.